

钛网系统

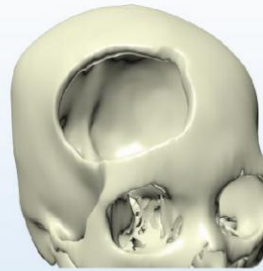
Titanium Mesh System

数字化三维钛网 (定制)

Digital Three Dimension Titanium Net (Customization)



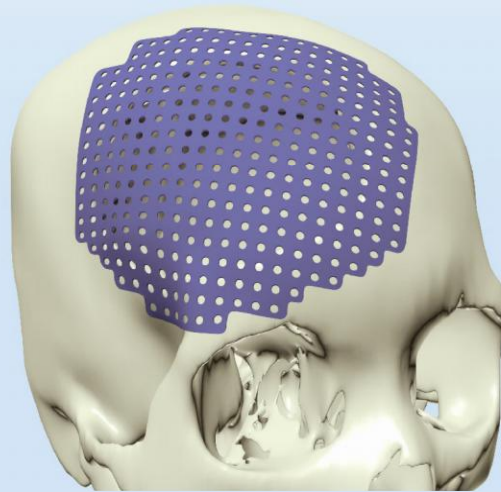
患者CT.MRI.DSA数据
CT.MRI.DSA data of patient



计算机颅骨成像重建
Peconstruction image



计算机钛网定制设计
titanium net custom-designed

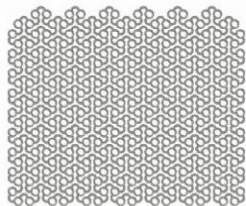


数字化三维钛网成型
multi-faceted shaped of restoration of
data applications titanium mesh



视频在线播放

钛网 T708 Titanium Net



产品名称 Product Name	材质 Material	厚度 (mm) Thickness	规格 Specification	产品编号 Product No.
钛网 Titanium Net	纯钛 Pure Titanium	0.8	90 × 90	T708W0090
			80 × 100	T708W0100
			100 × 119	T708W0119
			112 × 132	T708W0132
			145 × 150	T708W0150
			142 × 158	T708W0158

金属接骨螺钉(十字型) T5022 Metal Bone Fracture Screw (Cross Type)



钉帽形式 Head of Nail Type	材质 Material	螺纹直径(mm) Diameter	长度(mm) Length	产品编号 Product No.
十字型 Cross Type	钛合金 Titanium Alloy	2.0	5、6、7、8、	T5022105- T5022108
			10、12	T5022110- T5022112

颌面钢板系列

Maxillofacial Bone Plate Series

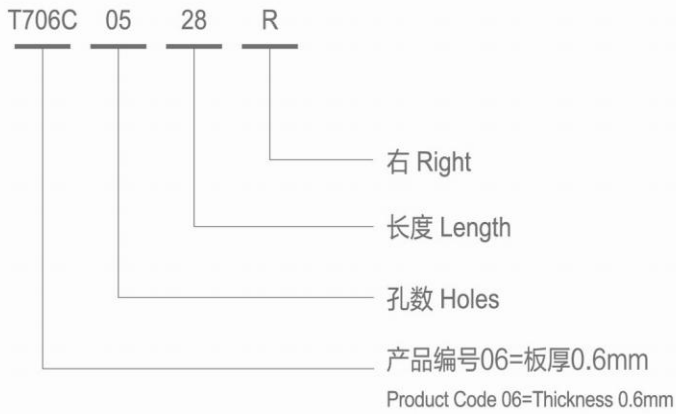


颌面钢板系列

Maxillofacial Bone Plate Series

类别指示图:

Category directive



T710N0411



T710N0822



T710N1235



T710N1646



T706J0422



T706J0634



T706J0845



T706K0425



T706K0633



T706J1055

金属接骨螺钉(十字型) T5022 Metal Bone Fracture Screw (Cross Type)



钉帽形式 Head of Nail Type	材质 Material	螺纹直径(mm) Diameter	长度(mm) Length	产品编号 Product No.
十字型 Cross Type	钛合金 Titanium Alloy	2.0	5、6、7、8、	T5022105- T5022108
			10、12	T5022110- T5022112