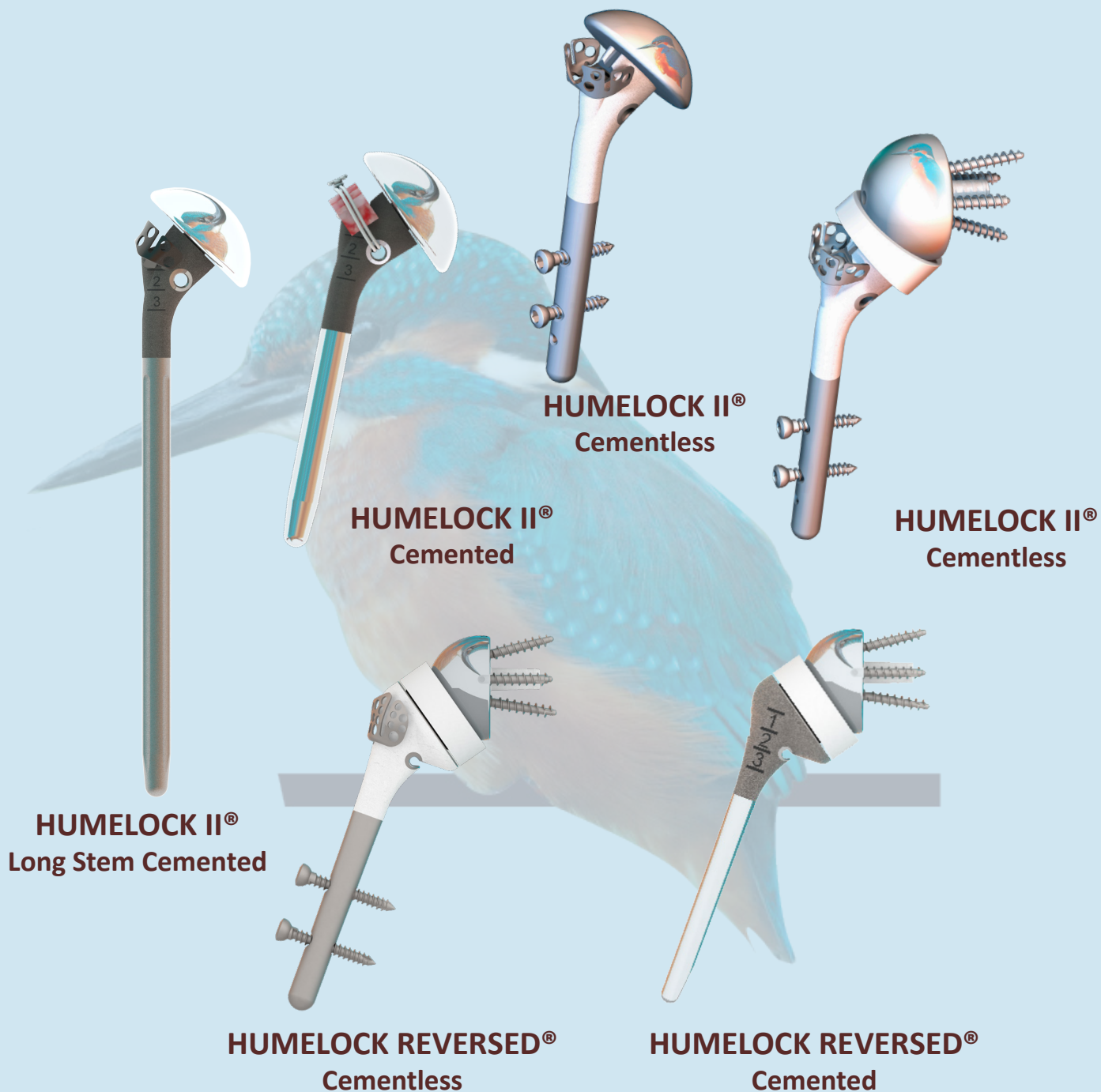




# SOLUTIONS

## TRAUMA SHOULDER SURGERY



## TECHNICAL FLYER



# ANATOMIC

## TRAUMA SHOULDER SURGERY

### HUMELOCK II® Cementless Stem

SIZES:  
Ø08mm  
Ø10mm  
Ø12mm  
Ø14mm



### HUMELOCK II® Cemented Stem

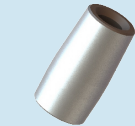
SIZES:  
Ø06mm  
Ø08mm  
Ø10mm  
Ø12mm



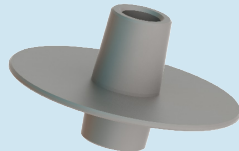
### HUMELOCK II® Cemented Long Stem

LENGTH:  
200mm

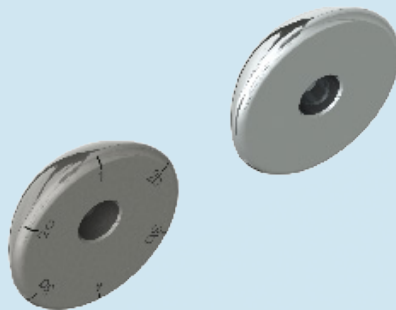
SIZES:  
Ø08mm  
Ø10mm  
Ø12mm



**Double Taper**  
TA6V +0mm/0° with Extraction  
System



**Spacers**  
+3mm & +5mm

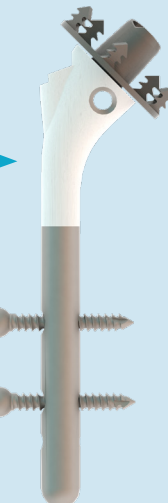
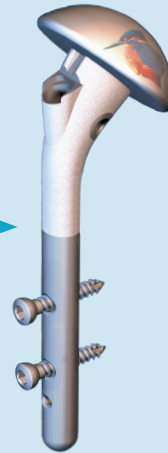


**CoCr Humeral Heads**

6 Centered Heads    8 Offset Heads  
Ø39x14    Ø43x16    Ø39x15    Ø43x17  
Ø46x17    Ø50x19    Ø46x18    Ø50x20



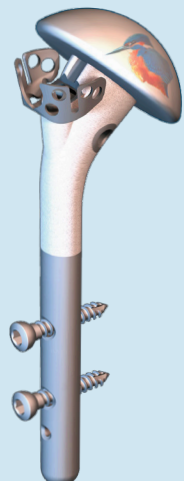
**Bilboquet II**  
Preservation of the Native Head  
4 Sizes: Ø26, 30, 34, 38mm



**Collars**  
4 Sizes  
**AND/OR**



**OMS**  
Offset Modular System  
5 Sizes: Ø30, 33,  
36, 39, 42mm

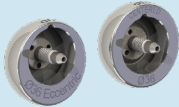


# REVERSIBLE - REVISION - REVERSED



## Humeral Cup 135°/145°

3 Sizes: +3, +6, +9mm  
2 Diameters: 36 & 40mm



## Glenospheres 10°

2 Diameters: 36, 40mm



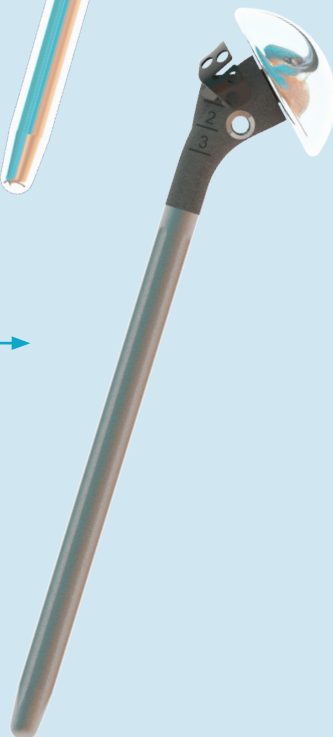
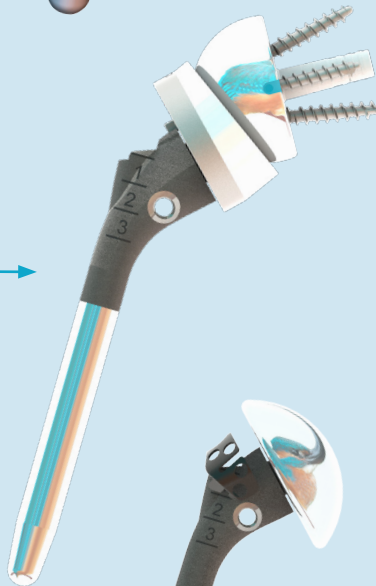
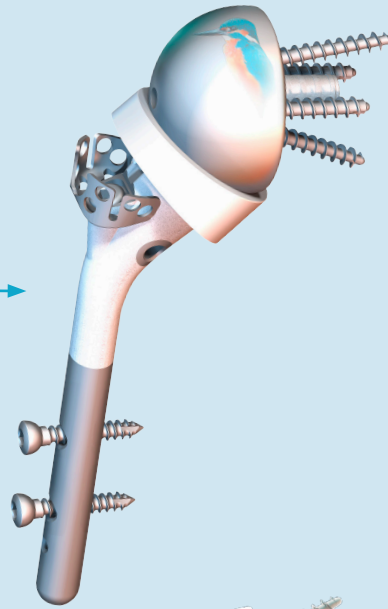
**Baseplate Ø24mm**  
TA6V ELI/Ti+HA Coated



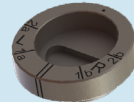
**Option: Post Extension**  
+6mm & +10mm



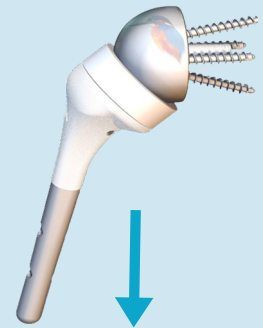
**Standard or Locking Screws**  
4.5mm L. 15mm-40mm  
(5mm increments)



**Reversed Humeral Cup**  
3 Sizes: +3, +6, +9mm  
2 Diameters: 36 & 40mm

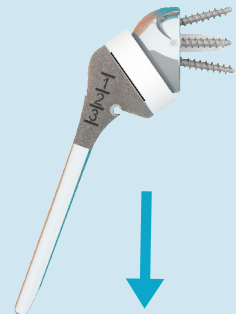


**Option:**  
**Humeral Spacer (+9mm)**  
Build up to +12, +15 & 18mm



## HUMALOCK REVERSED® Cementless

32/08mm  
32/10mm  
32/12mm  
36/10mm  
36/12mm  
36/14mm  
40/12mm



## HUMALOCK REVERSED® Cemented

32/06mm  
36/08mm  
40/10mm

# PROPERTIES

HUMELOCK® is a new-generation of modular implant designed for the effective treatment of 3- or 4-part fractures of the proximal humerus.

Furthermore, when the use of a reverse prosthesis is not possible because of the patient's age (< 70 years old), HUMELOCK® can achieve optimum anatomical reconstruction of the tuberosities thanks to the graft and the graft cutter which promote stability and consolidation of the tuberosities, which are essential to shoulder function.

HUMELOCK® is a solution which takes account of the latest scientific developments in the treatment of cephalotuberosity fractures and is ideally suited to the treatment of complex shoulder fractures.

## TUBEROSITIES SYNTHESIS: SMARTLOOP®

Tinted sutures in different colors.

### Technical Specifications:

Sutures: Polyethylene Terephthalate (PET) – USP size 5 (Metric size 7)

Needles: Triangular 1.8 mm - 135° (3/8 circle) – L = 40 mm

REF.	DESCRIPTION
292-1001	SMARTLOOP® WHITE USP 5
292-1003	SMARTLOOP® GREEN USP 5



GLOBAL HEADQUARTERS  
1663, rue de Majornas  
01440 Viriat, France  
[www.fxshouldersolutions.fr](http://www.fxshouldersolutions.fr)

US HEADQUARTERS  
13465 Midway Road, Suite 101  
Dallas, TX, USA 75244  
[www.fxshouldersolutions.com](http://www.fxshouldersolutions.com)

CE 1014

FT06-EN-13/03/2022